

EDEN LACY FISHERY RIVER EDEN

PAPER GHILLIE



EDEN LACY FISHERY
1.8 Miles, left bank fishing
15 named pools

www.rivereden.co.uk

Eden Lacy Lazonby, Penrith, Cumbria CA10 1BZ

Grid reference: NY 56287 38298
Grid Reference (6 figure): NY562382

Latitude: 54.737738
Longitude: -2.6804413



Directions

From the M6 (Junction 40), take the A66 at the motorway exit roundabout

After 0.25 of a mile you come to another roundabout where you take the A686 signposted to Alston

After about 4 miles turn left onto the B6412

After 2 miles, go through Great Salkeld

0.25 miles out of Great Salkeld turn right down Mill Lane (Sat Nav), signposted to Eden Lacy.

Parking

There are 4 designated parking areas.

P1 Parking

Turn off B6412 (sign posted to Eden Lacy) down Mill Gate Lane. After half a mile you will see a cattle grid on your right. Drive over this and straight down to the river. This is the top end of the fishing beat. Suitable for 4x4 and general vehicles through the summer months. Be aware of lambs in the spring.

If you use **what3words**, the location is ///dominate.leaps.hypocrite



P2 Parking

If you continue down Mill Gate Lane, you will come to a white gate on a bend. Go through that white gate, down the track under the railway and you will see a sign to P2 on the right, which leads down to the Meadow. Suitable for 4x4 and general vehicles through the summer months. Be aware of lambs in the spring.

If you use **what3words**, the location is ///finishers.flipper.area



P3 Parking

Continue down Mill Gate Lane, past the white gate, past the Lodge (1 bedroom cottage on the right), over the railway and cattle grid. You come into the park, you will see a walled garden on your right, turn right after the walled garden and continue down the track to the white (Scout) gate. Park there and walk down to the river. Suitable for 4x4 and general vehicles through the summer months. Be aware of lambs in the spring.

If you use **what3words**, the location is ///pools.mermaids.erupts



P4 Parking (not signed)

Take the P3 turning, past the walled garden. You will then see a track going diagonally left across the park (as opposed to straight on that leads to P3). Follow the track to the gate in the corner. Go through the gate, down the hill and from here you can drive (opening 2 gates on the way) to the bottom of the fishing beat. This is P4. Suitable for 4x4 vehicles only. Be aware of lambs in the spring.

If you use **what3words**, the location is ///pillows.distanced.delved



Victor Gubbins (1936-2022) provided us with detailed information and precious insights on the 15 pools that comprise the Eden Lacy fishery on the River Eden.

1. THE VIADUCT

The TOP BOUNDARY is where the stream enters the river at the CORNER POOL – a small channel about three quarters of the way across the river – worth a few casts, particularly when Grilse are running.



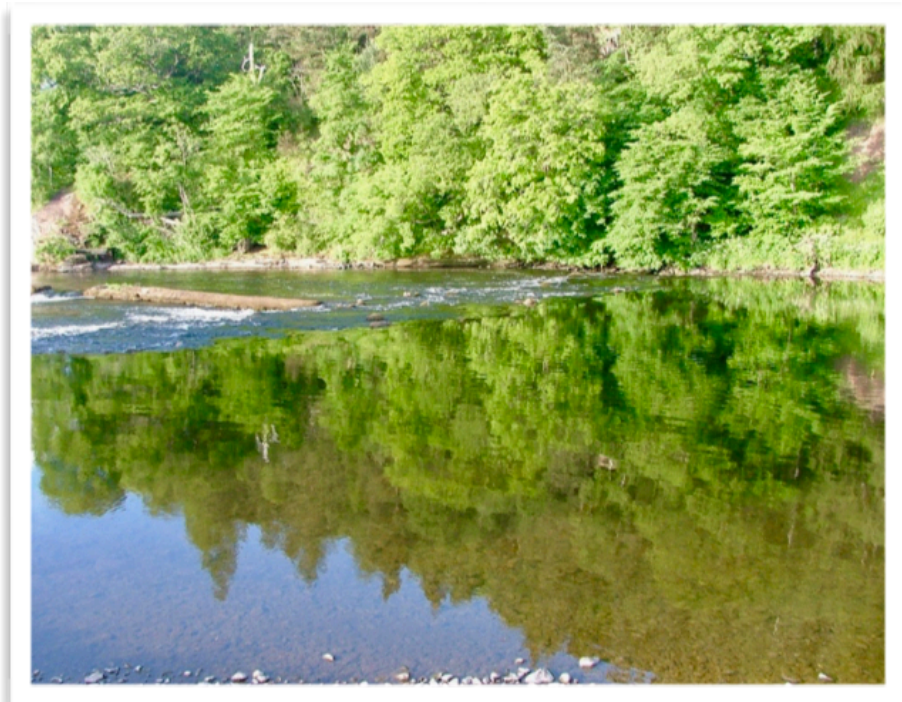
UPPER, MIDDLE and LOWER VIADUCT STREAMS: the best fly water from mid-April and excellent Trout water. A low water pool – be careful not to wade out too far as most of the fish take on our side of the streams, often ‘on the dangle’.

Note: Victor caught his first salmon here in 1951 (aged 15) weighing 14lbs from the other side of the bank!



2. THE MEADOW

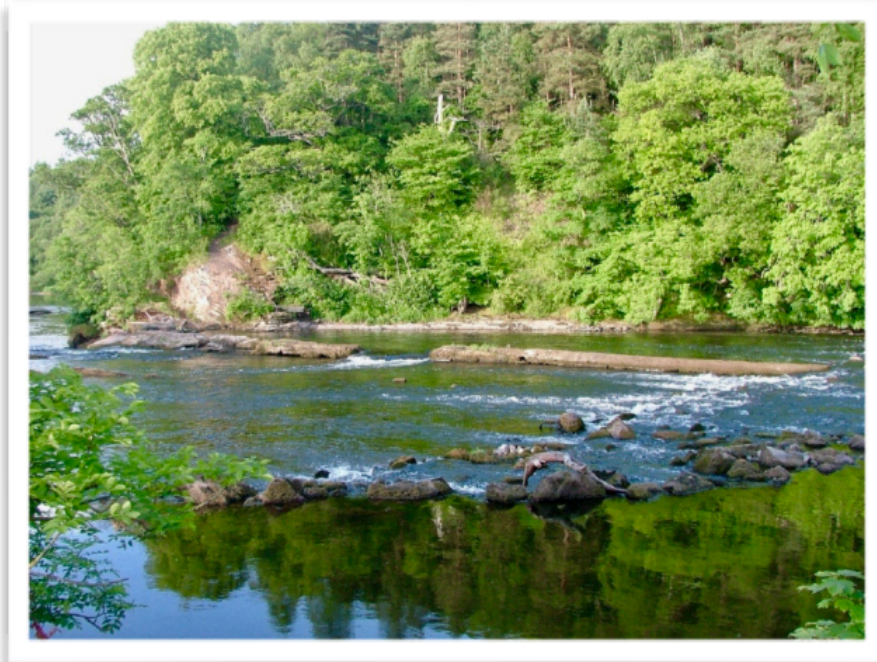
Fish lie from underneath the electricity wires down to the top of THE FALLS but especially under the trees by BROWN OWL CAVE (the old boathouse carved into the sandstone) – a deceptively long cast.



3. THE FALLS

Really good trout water. When the river is very low you can wade across the rocks on top of THE FALLS and fish the far stream, although this is not recommended for the faint hearted! Please remember that wading is inherently dangerous. Otherwise cross the MILL RACE (foreground of first picture) and fish the nearside run.

The foam in the second photograph, foreground, is caused by the alkaline tributary of the River Lowther mixing with the more acid waters of the Eden and Eamont. It is not pollution!



4. LONG MEG

A high water pool. One of the many holding pools and a good spring pool. Pre-1966 (when Eden stocks were devastated by ulcerative dermal necrosis or UDN disease) it was estimated LONG MEG held well over 100 Salmon.

The pool fishes all the way down, depending on the time of year and the height of the water. It is worth starting high up as fish can lie in the top nearside 'V' (extreme right of the first picture). In summer low water, as shown, you can wade to the middle rock and fish the far stream. The far side 'V' can hold Sea Trout from early June.



Best fish taken:

28lbs by Victor's father (WMG). LONG MEG (waiting to be beaten!).

25lbs by Victor Gubbins. BATHING ROCK.

Both fish are outlined in the sandstone slabs outside the front door at Eden Lacy.

The tail of the pool is THE BATHING ROCK.

5. THE BATHING ROCK

This lie is at the tail of LONG MEG.

The main high water lie is on the submerged sandstone slab in the centre of the river between the actual bathing rock and our bank.



6. THE SANDBANK

A spring high water pool and also a Kelt hole.

A long cast square at the top can be successful - also where the stream comes into the river on the opposite bank. In low water, fish right down the glide, the run into THE CAVES pool.



7. THE CAVES

A low water pool. Fish mostly take off the sloping shelf on the far side and at the tail.



8. THE THREE ROCKS

A high water pool, named after the three rocks on the opposite side. The big rock in the centre is nicknamed Skiddaw. The ideal height seems to be when Skiddaw is 1 foot out of the water (it's a bit more in the first photo). Fish generally take in the midstream but sometimes lie very close to our side around the new lies.



9. JOHNSTONE'S

Named after a one-time owner of Eden Lacy. The pool holds the record for the fishery: 34 lbs (from the opposite bank).

The best casts are at the neck, off the bend on the far side, around the rock in the centre and particularly, in the autumn, at the tail of the pool before it enters THE WILLOWS stream.



10. THE WILLOWS

This used to be one of the most prolific pools on the beat (pre-UDN) and now is beginning to yield numbers of fish again from both banks.

Don't be tempted to walk out along the rocks to fish the neck – you'll frighten off any fish. Fishes at all heights.



11. LOWER WILLOWS

A high water pool only – except for Trout.

There are a few big boulders a few metres out. The fish can rest around them, particularly after a flood and when they are running.

Start about 10 metres below the tree (which is now a stump!) and fish down to the rough water. It does not require a long cast.



12. THE POST & ISLAND FOOT

THE POST always referred to the prolific Trout (and Grayling) water at the top of this stretch. There used to be an old post in the river.

ISLAND FOOT is a particularly good autumn stream. It fishes all the way down, as far as you can wade – and beyond! It is also excellent water for Trout and probably Sea Trout.



13. DALERAVEN

Pronounced Dal-raffen; the lovely Norse name for the beck that enters the river at the tail of the pool.

This is an excellent Trout (and Sea Trout) stretch. The Salmon lie under the far bank, fish down to the run-off. It is best fished on a falling river and is a deep but relatively easy wade at the top - but don't wade out too far.



14. THE MAINS & THE WALL

One of the best fly stretches and fishes at most heights and times of year. It is excellent for Trout, particularly the far side at the top of the stream. Salmon lie from the large Sycamore tree (on the other bank) all the way down, depending on the height of the water. Start higher up in the fast water when Grilse are running.

THE WALL refers to the stretch where the bank support wall starts on the opposite bank all the way down to the big 'boil' (a submerged rock) which is the beginning of the GRAVEL BED. Fish lie down the far side near the opposite bank – another deep easy wade at the top is needed to cover the lies properly but then draw in to our side as you progress down to the bottom of the pool. Fish lie above and in front and just off the big boil!



15. THE GRAVEL BED

A lovely pool, particularly in the autumn, and our bottom boundary. The main taking places are just above and the far side of the main boil in the centre of the river; opposite the large willow on our side and then all the way down until the line 'dies'. It is also very good water for Trout and Grayling and probably also for Sea Trout.

Generally a high water pool, it is best fished for resting salmon after a rise in the water and when it is dropping again.



EDEN LACY FISHING

GUIDELINES

We have one or two guidelines that we would ask you to follow:

THE HUT is there for your use. Please leave it as you should find it, i.e. swept out ready for the next person and all rubbish removed.

FISHING is to be conducted at all times in a sporting and gentlemanly manner. Preferably, fishing should be FLY ONLY but spinning with artificial lures is permitted from below the viaduct to the bottom of Island Foot pool, with permission and at certain river heights.

Worms, shrimps or prawns are forbidden at all times.

Salmon are caught on a strictly **CATCH & RELEASE** basis.

Please be sparing with the trout and grayling, a brace to be taken is perfectly acceptable.

CARS: Please leave them in any one of the three designated areas (see map on page 3). There is a reasonably good track to the bottom of the beat but please be sensible and do not use it in very wet weather. No vehicles are to be driven to the hut itself, i.e. from The Willows up, as it is an area of importance for wild flowers and nature.

You may bring your **DOG**, assuming it is well behaved and under control. Please try and keep the dog on the path as to not disturb both the nature and wild flowers.

NO FIRES OR BARBECUES.

Please fill in the DIARY in the HUT, even if NTR (nothing to report) but do put things in you see of interest i.e. sightings of otter, osprey, mink, water voles.

We hope you have an enjoyable and successful day. Tight lines!

HEALTH AND SAFETY

Tenants are warned that wading is dangerous. For example river currents are strong; hidden rocks can be treacherous; river banks can be slippery.

Wading sticks are recommended at all times.

Life jackets should be worn.

Eden Lacy fishery takes no responsibility for any accidents or for the loss or damage to any personal belongings whilst the tenant is on the estate. Do not leave items unattended as a public footpath follows along parts of the riverbank.

ENVIRONMENT AGENCY ISSUES

All rods are responsible for ensuring that they and their guests are in possession of a valid Rod Licence. The owners reserve the right to ask all rods for their licence details and may supply such details to the Environment Agency

GYRODACTYLUS SALARIS

The UK is the last country in Europe not to have this terrible parasite which would wipe out all salmon and trout stocks if it arrived.

All tenants who have fished overseas must disinfect their tackle before fishing.

All **FISHING BOOKINGS** should be made through our website:

<https://www.rivereden.co.uk/book-salmon-trout-fishing-on-the-river-eden>

Or through our letting agent directly:

<https://www.fishpal.com/England/Cumbria/EdenLacy/>